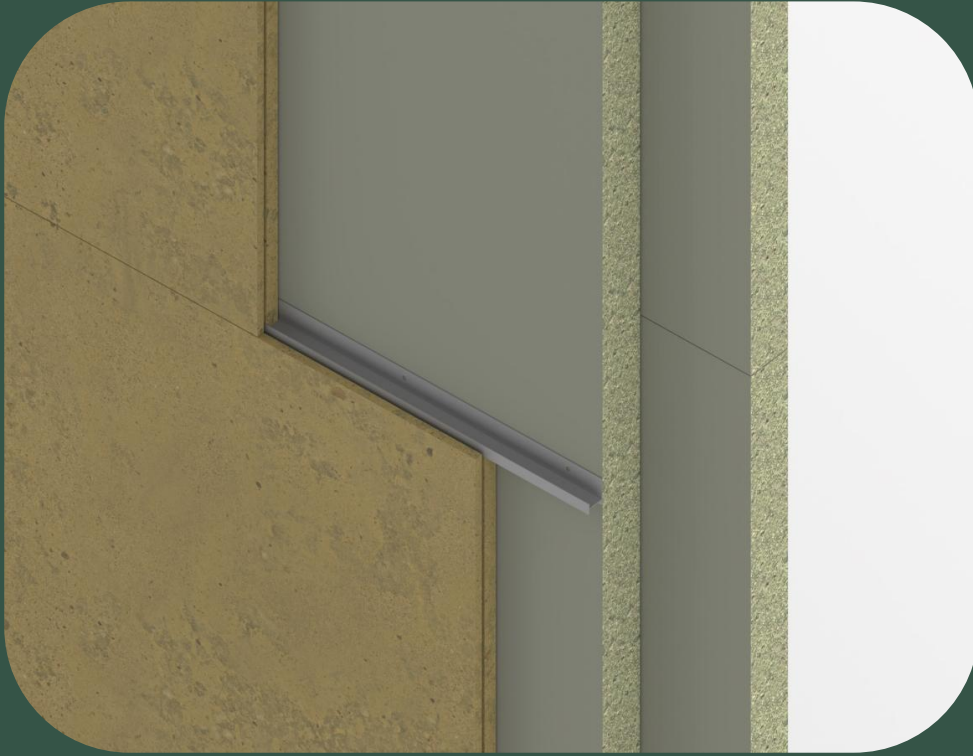


Low carbon partition wall



Compressed clay soil meets compressed straw

Mounted for disassembly



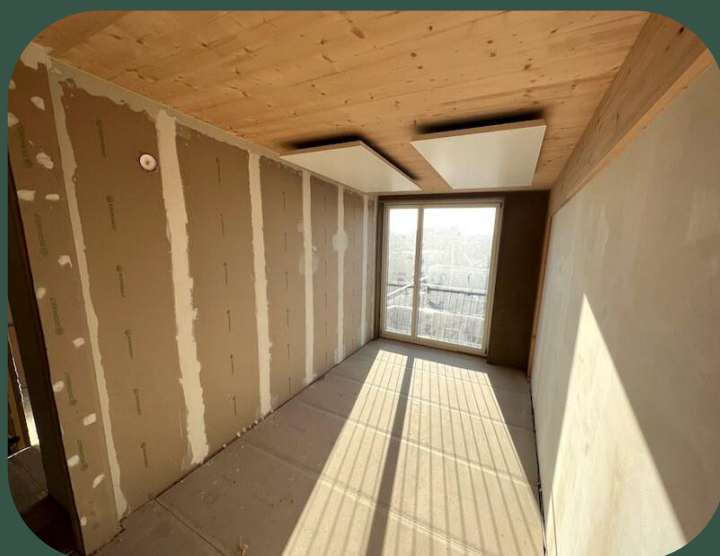
LAVKARBONBYGG

NATURENS BYGGEMATERIALER

Low carbon partition wall



Compact fireproof straw boards have been made for 85 years



Ekopanely boards are 4 or 6 cm thick and typically mounted as sandwich wall on studs before plastering.



LAVKARBONBYGG
NATURENS BYGGEMATERIALER

Low carbon partition wall



Fireproof clay panels have been produced for 25 years



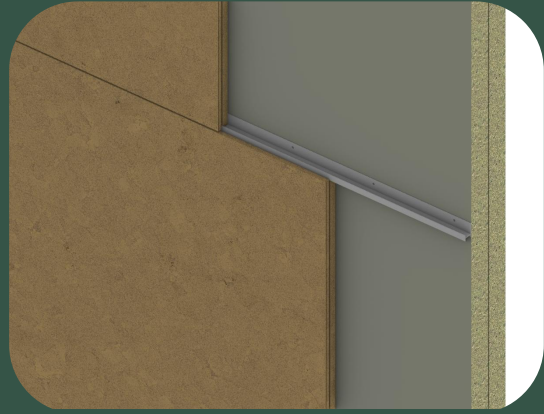
Lemix panels are 22 mm thick and typically mounted with screws before plastering with clay plaster.



LAVKARBONBYGG
NATURENS BYGGEMATERIALER

Low carbon partition wall

New: Minimalistic and designed for disassembly

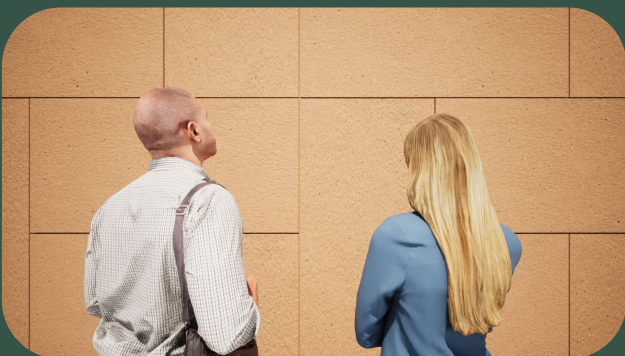


2x 40 mm Ecopanely are screwed together without studs,
and 22 mm Lemix mounted onto it without screws.



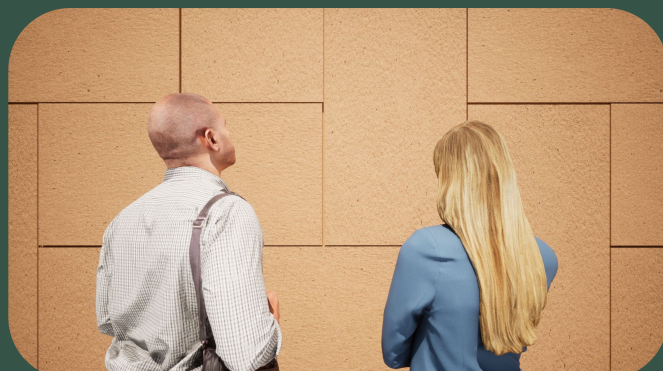
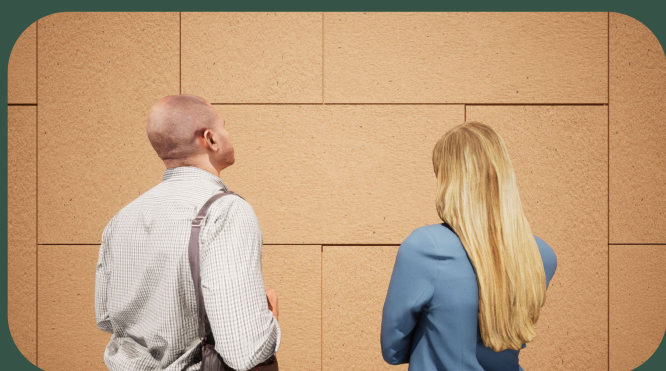
LAVKARBONBYGG
NATURENS BYGGEMATERIALER

Low carbon partition wall



LAVKARBONBYGG
NATURENS BYGGEMATERIALER

Low carbon partition wall



Surface color and
texture is easily altered
with clay paint



LAVKARBONBYGG
NATURENS BYGGEMATERIALER

Low carbon partition wall



The opposing side may also be clad with Lemix panels, plastered or simply wallpapered.



*-We recommend the natural wallpapers from Organoid.
Perhaps this
“Light on flaxfleece”?*



LAVKARBONBYGG
NATURENS BYGGEMATERIALER

Low carbon partition wall

Emissions: -303.66 CO₂e/m² (A1-A3, C3,D) *

Material price per m²: 44 Euro + import

Fireclass: A+E

Acoustic: To be tested; expected 50+



Concept and design:

Arch Silje Seim, Arch Petr Tůma & Ing. Max Vittrup Jensen

* = To be verified. EPDs exist on both products.



LAVKARBONBYGG

NATURENS BYGGEMATERIALER